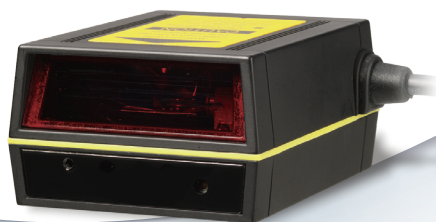


Z-5151

High-Speed Laser Scan Module

The scan module offers multiple interfaces including keyboard, RS-232C, and HID USB. Besides, it has three mounting holes on the back of the case reserved for quick and easy installation into your equipment. When working in field, its two-color LED in the front gives immediate scanning response and the programmable tone and beep time are to meet users' need and enhance productivity.

- Superior scanning performance
- Intelligent and industrial housing design
- Flexible communications
- Proprietary Z-SCAN+ technology
- Up to 500 scans per second



1. Cubic design with aluminum dye-casting housing
2. Back mounting holes

OPERATIONAL

Light Source	650 nm visible laser diode (VLD)
Depth of Field	5 mil: 70 – 130 mm
	7.5 mil: 70 – 190 mm
	10 mil: 60 – 210 mm
	13 mil: 45 – 220 mm
	20 mil: 30 – 290 mm
Scan Rate	500 scans per second
Minimum Bar Width	5 mil @ PCS=90% (Code 39)
Print Contrast	30% @ UPC/EAN 100%
Indicator	Two-color LED (green & red)
Beeper Operation	Programmable tone & beep time
System Interface	Keyboard, RS-232, HID USB, USB Virtual COM, OPOS, JPOS

PHYSICAL

Dimension	66.9 × 52.9 × 32.0 mm
Weight	210 g
Cable	Standard 2M straight

POWER

Input Voltage	5 VDC ±10%
Power Consumption	1.05 watts
Operating Current	210 mA typical

REGULATORY

Laser Class	CDRH Class IIa; IEC 60825 Class 1
EMC	CE & FCC DOC compliance, VCCI, BSMI

ENVIRONMENTAL

Operating Temperature	0°C – 40°C (32°F – 104°F)
Storage Temperature	-20°C – 60°C (-4°F – 140°F)
Humidity	5% – 95% RH (no dewing allowed)
Light Level	Max. 4,500 Lux (fluorescence)
Drop Durability	Designed to withstand 1M drops

DECODING CAPABILITY

1D Barcode	UPC/EAN/JAN, UPC-A & UPC-E, EAN-8 & EAN-13, JAN-8 & JAN-13, ISBN/ISSN, Code 39, Codabar, Code 128 & EAN 128, Code 93, ITF 2 of 5, IATA Code, MSI, China Postal Code, Code 32, Industrial 2 of 5, Standard 2 of 5, JAP, Code 11, GS1 DataBar, GS1 DataBar Limited, GS1 DataBar Expanded, Telepen
------------	---

